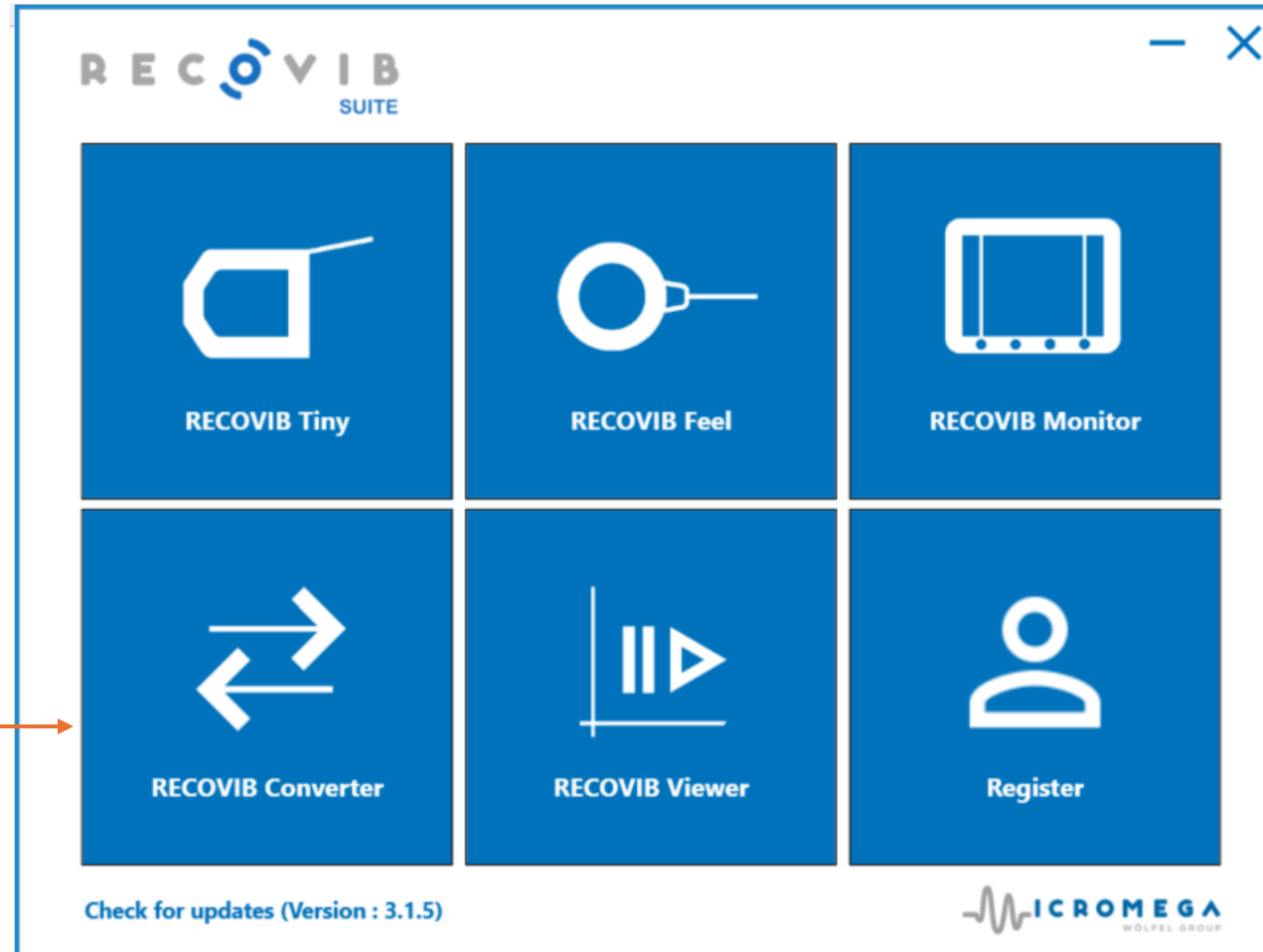


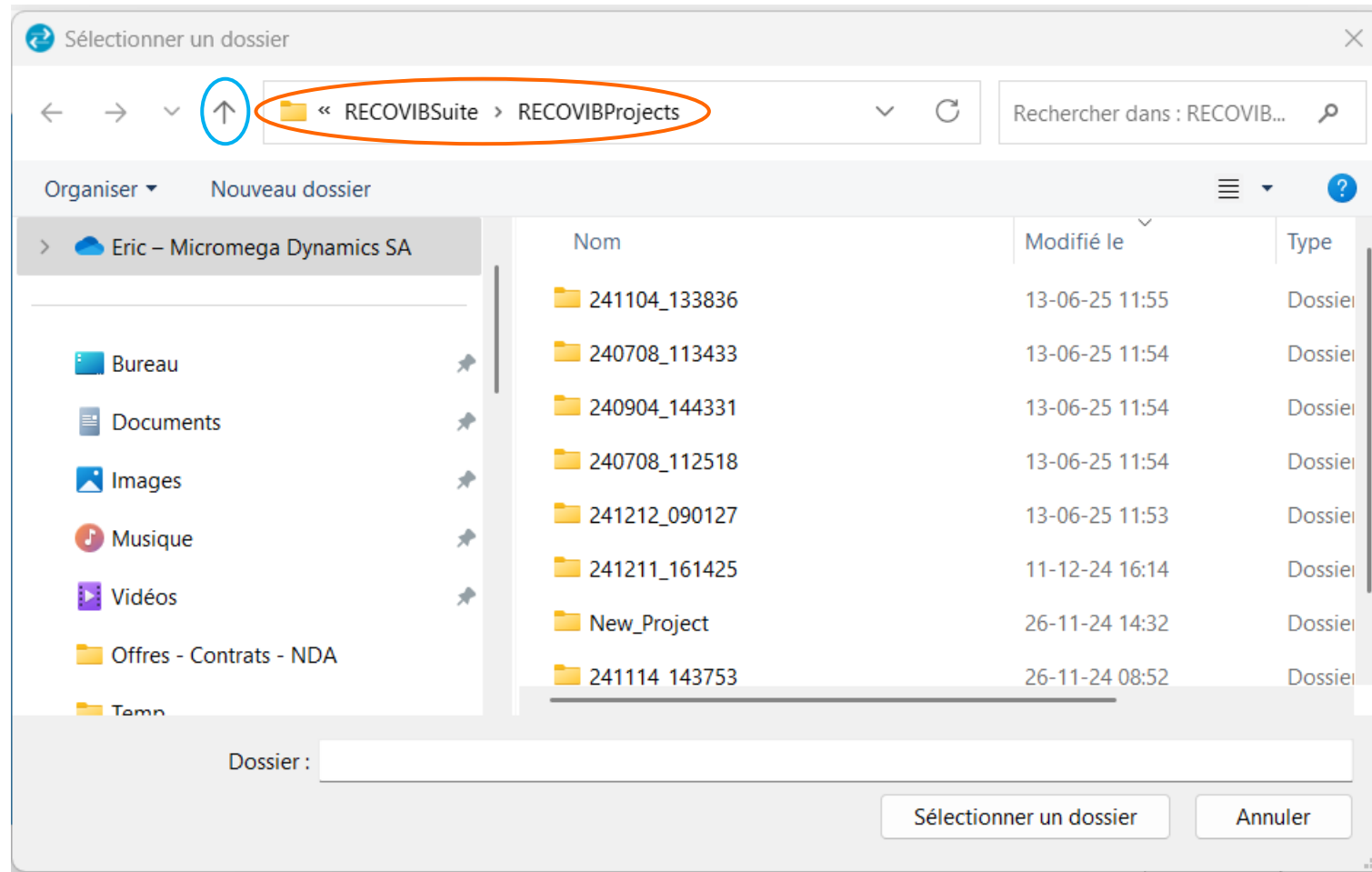
Launch RecovibSuite software

Start Recovib Converter

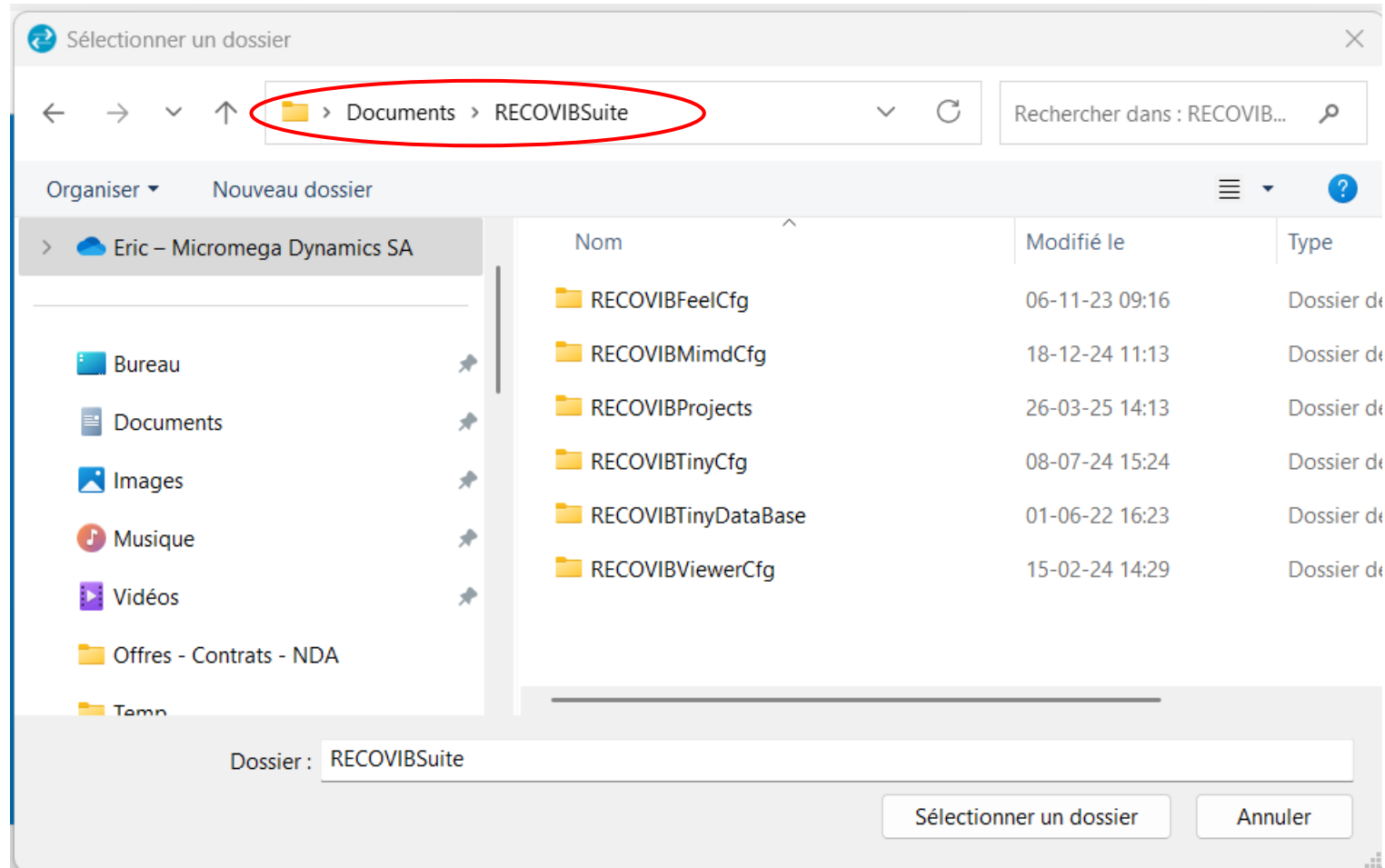


1. Following all steps, you'll arrive in the RECOVIBProjects directory when doing the files selection

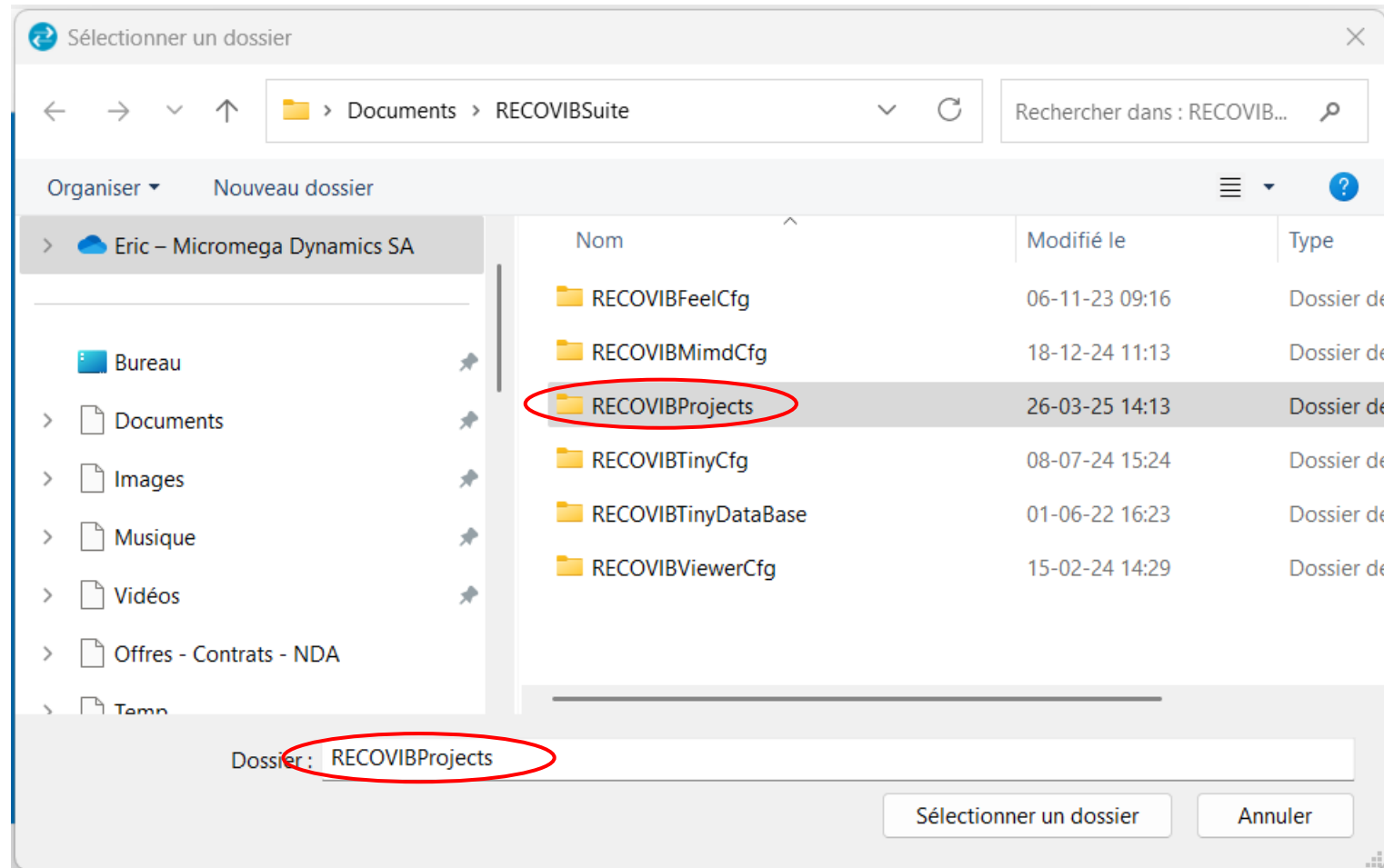
2. Go back one level



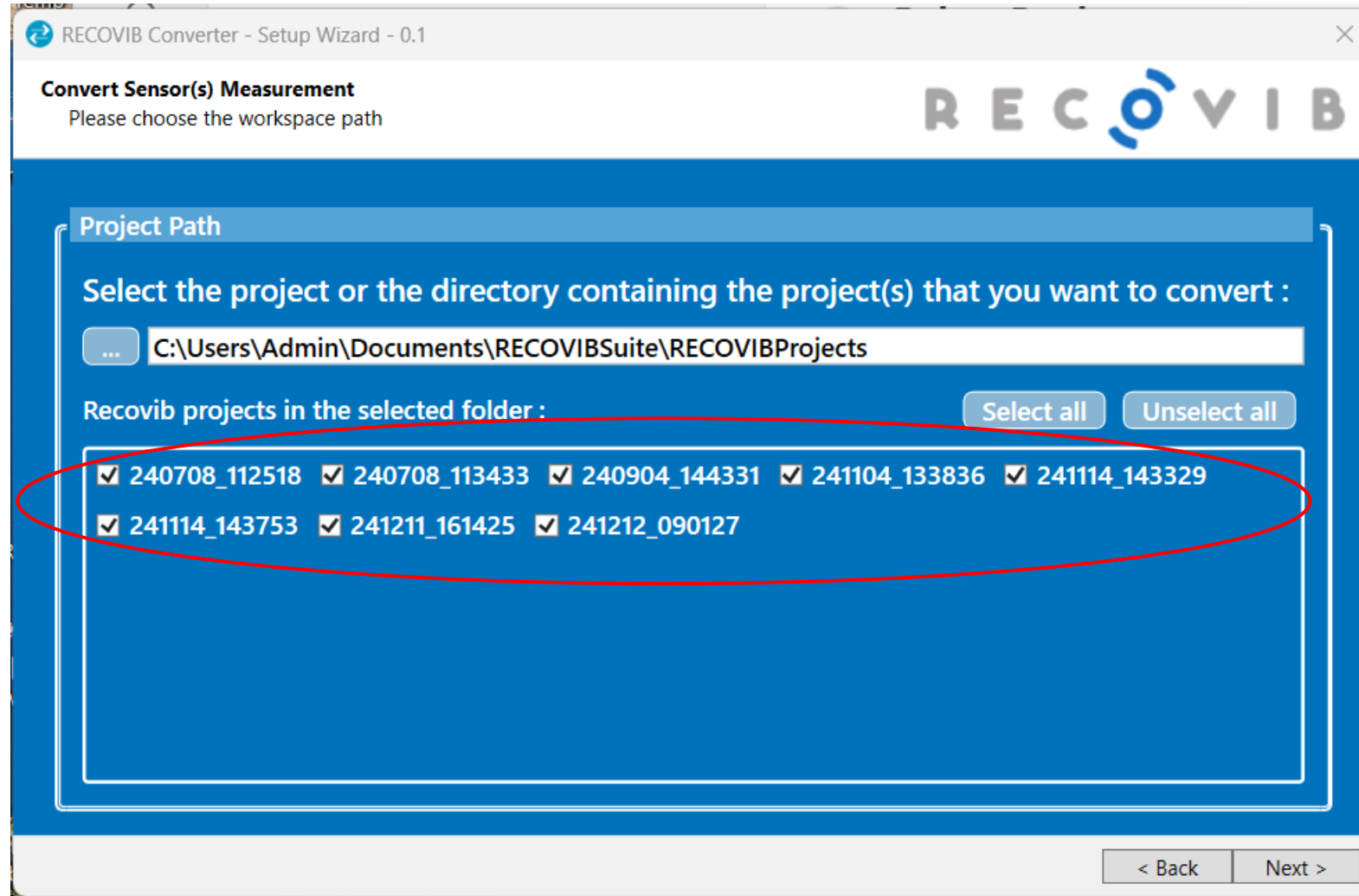
You'll arrive in the RECOVIBSuite directory



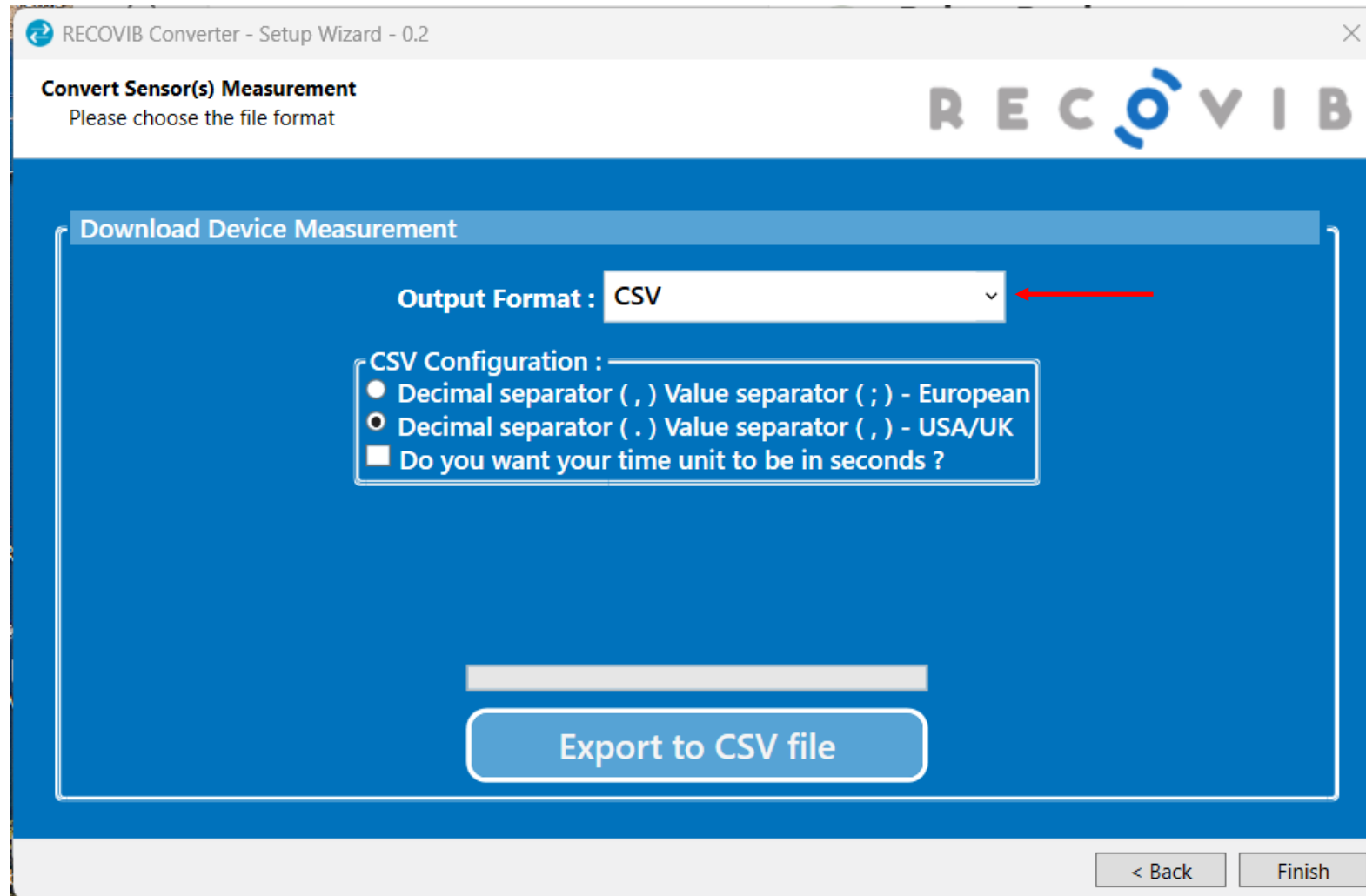
In the RECOVIBSuite directory select the whole directory RECOVIBProjects



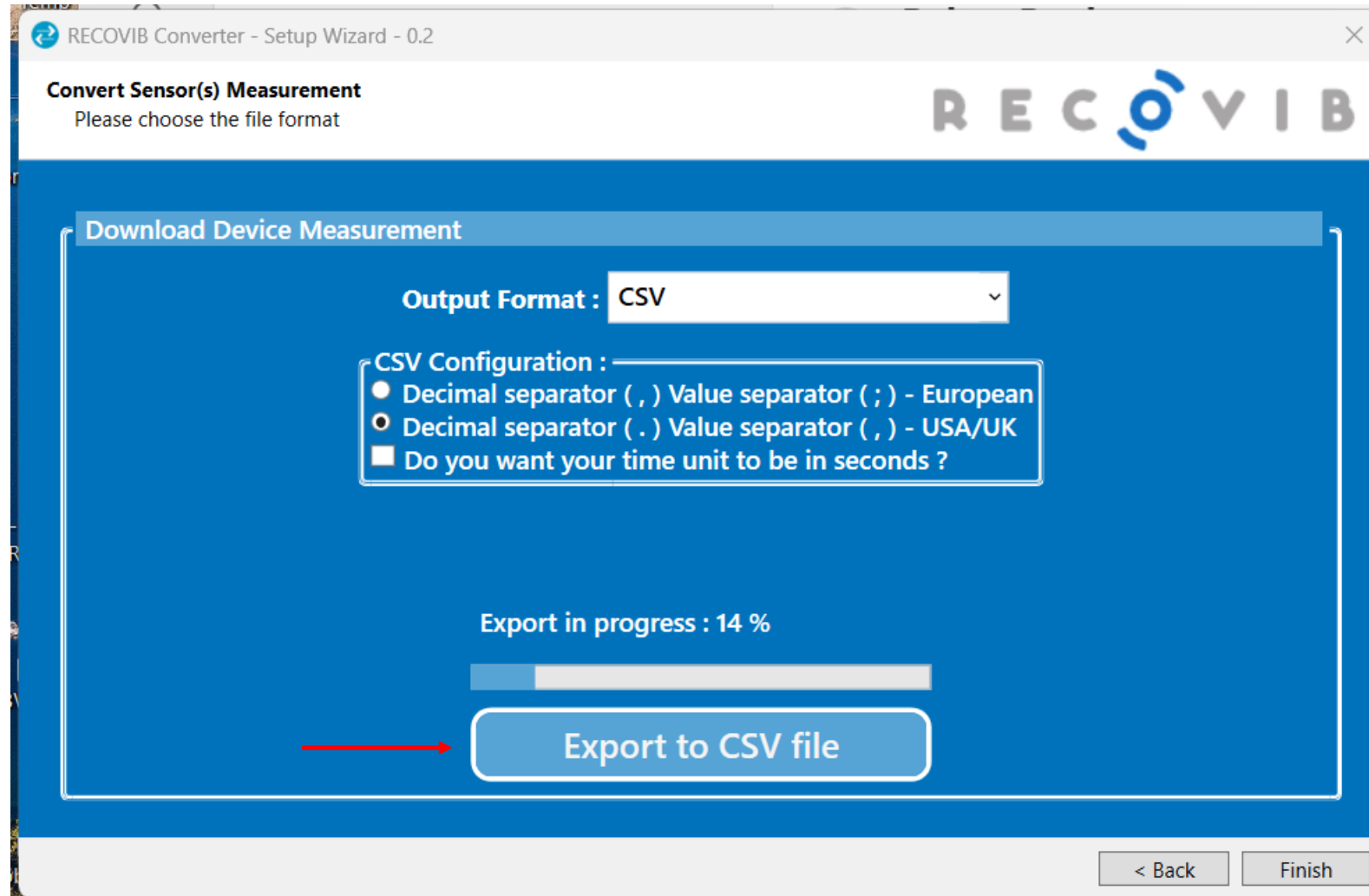
All the data files in this RECOVIBProjects directory will be selected



Chose the format in which you want to convert the data's (here CSV)



Start the conversion by « clicing » on Export to CSV file





Convert Sensor(s) Measurement

Please choose the file format



Download Device Measurement

Output Format :

- CSV Configuration :
- Decimal separator (,) Value separator (;)
 - Decimal separator (.) Value separator (,)
 - Do you want your time unit to be in seconds

Export complete.

OK

Export in progress : 100 %



Export to CSV file

< Back

Finish

Convert Sensor(s) Measurement

Please choose the file format

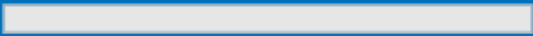


Download Device Measurement

Output Format : CSV

- CSV Configuration :
- Decimal separator (,) Value separator (;) - European
 - Decimal separator (.) Value separator (,) - USA/UK
 - Do you want your time unit to be in seconds ?

Export complete.



Export to CSV file

< Back

Finish

The converted data's in CSV file are available in each project directory

